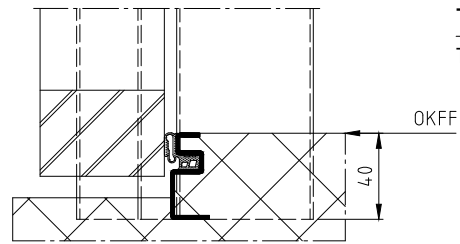
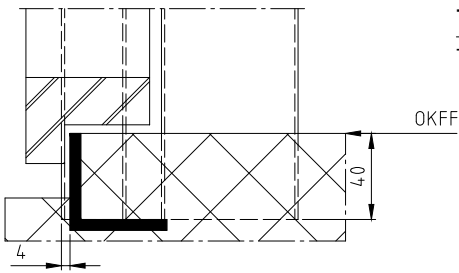


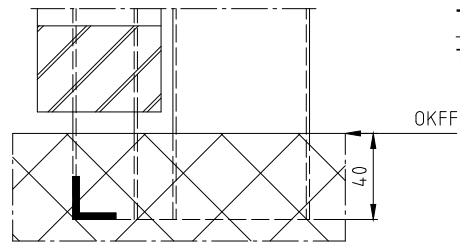
Typ S
T8501



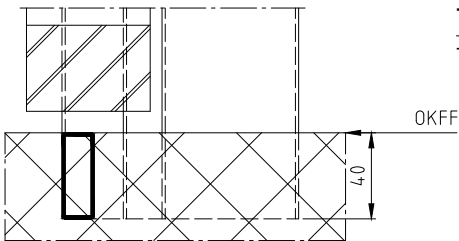
Typ DI
T8502



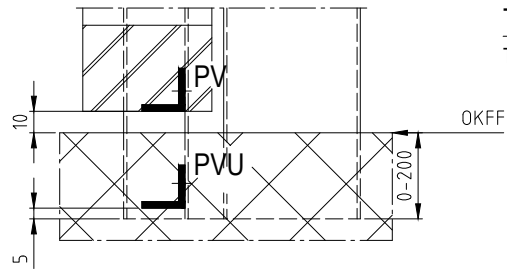
Typ S45
T8720



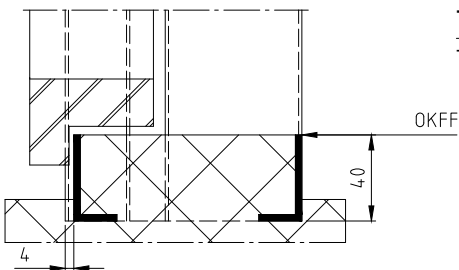
Typ O
T8504



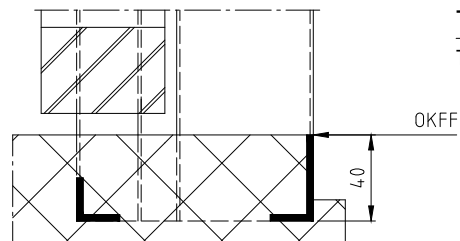
Typ R
T8505



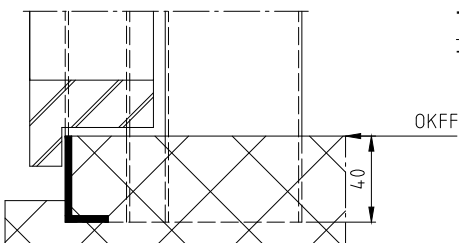
Typ PV (PVU)
T8506 (8503)



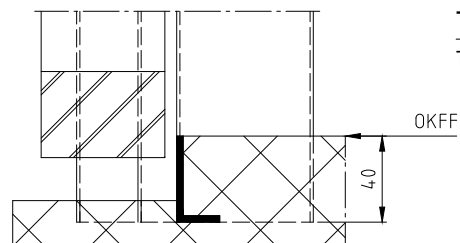
Typ DS
T8507



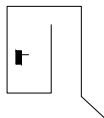
Typ KS
T8508



Typ SB
T8509



Typ FB
T8510

Erstellt: 03.07.2019	Ind.	Datum	Name	Benennung: Schwellendetails, Détails des seuils, Dettagli soglia für Zargen mit Doppelfalz, Türblatt überfältz Pour huisserie double battues, porte à recouvrement per telai con porte a battuta con doppia battuta?	 Zeichnungs Nr. T8500-3A	
GüSt	-					060
Zeichnungsstatus: Freigegeben 19.07.2019 KaPa						
Änderungstext: - -						