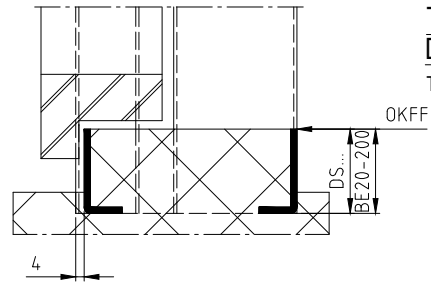
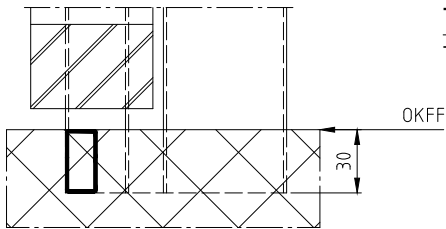


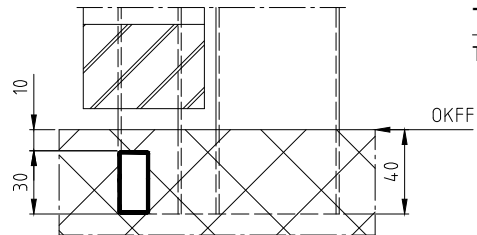
**Typ S2, S3,
S5 - S10**
T8522 - 8530



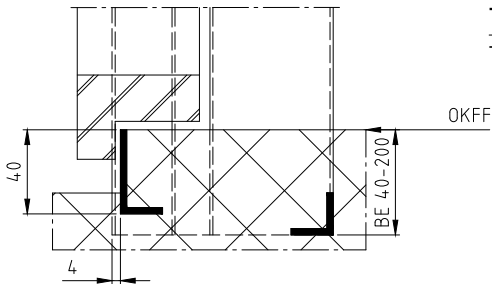
**Typ DS2, DS3,
DS5 - DS10**
T8552 - 8560



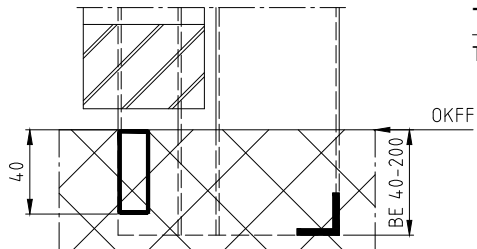
Typ R3
T8533



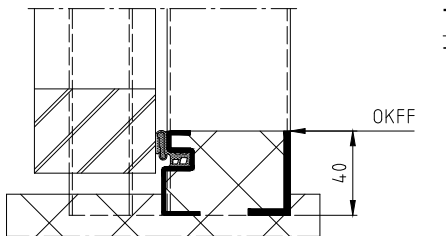
Typ RU3
T8534



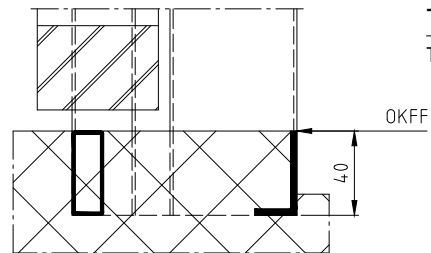
Typ S40
T8540



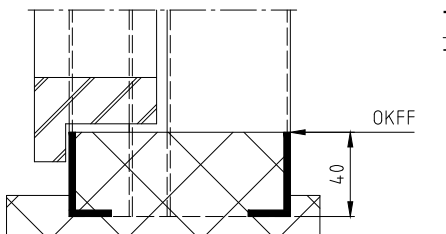
Typ R40
T8542



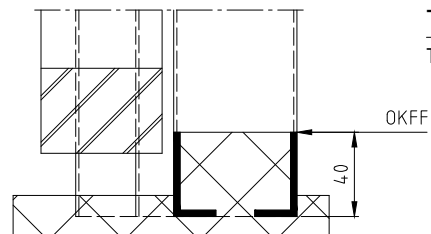
Typ XDI
T8513



Typ XR
T8514



Typ XSB
T8515



Typ XFB
T8516

Erstellt: 03.07.2019

GüSt

Zeichnungsstatus:

Freigegeben

19.07.2019 KaPa

Ind.

Datum

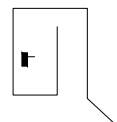
Name

-

Benennung:

Schwelldetails, Détails des seuils, Dettagli soglia
für Zargen mit Doppelfalz, Türblatt überfältzt

Pour huisserie double battues, porte à recouvrement
per telai con porte a battuta con doppia battuta?



Zeichnungs Nr.

T8500-3B

060

Änderungstext: - -