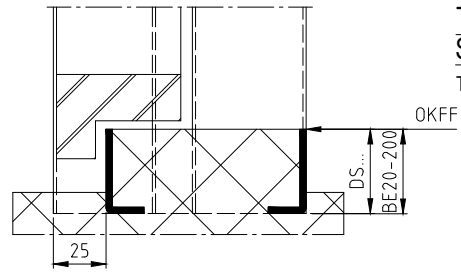
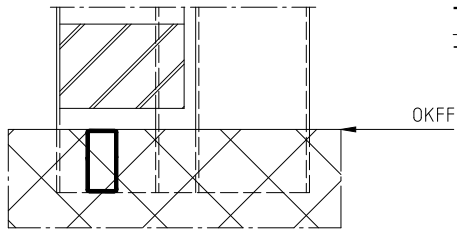


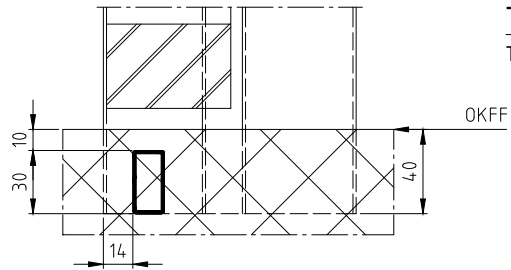
**Typ S2, S3,
S5 - S10**
T8522 - 8530



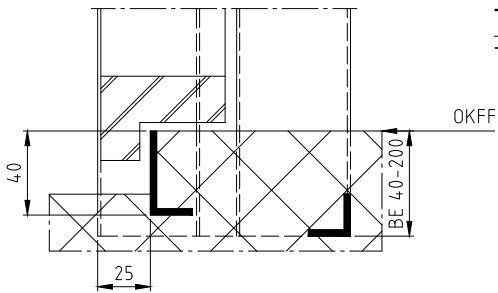
**Typ S2, S3,
S5 - S10**
T8552 - 8560



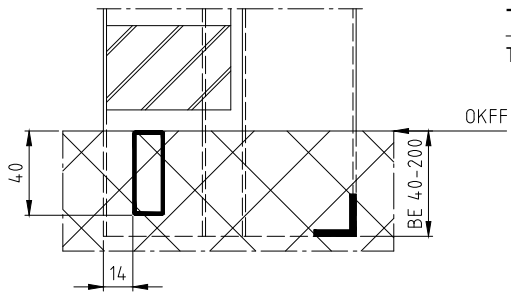
Typ R3
T8533



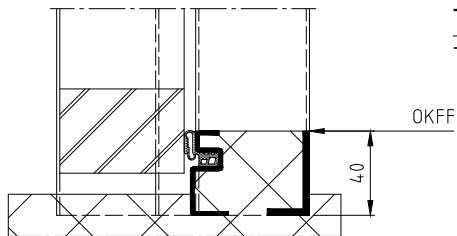
Typ RU3
T8534



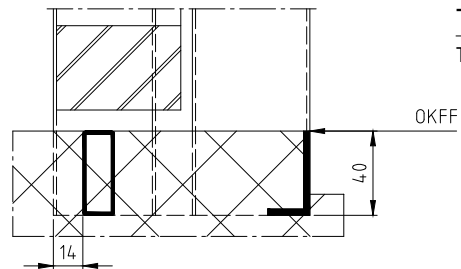
Typ S40
T8540



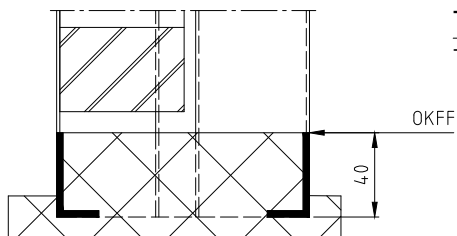
Typ R40
T8542



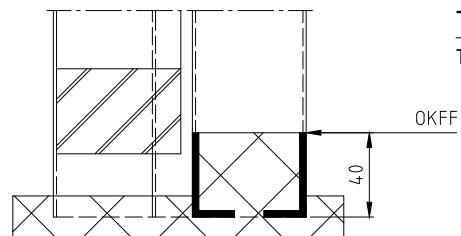
Typ XDI
T8513



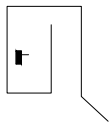
Typ XR
T8514



Typ XSB
T8515



Typ XFB
T8516

Erstellt: 03.07.2019	Ind.	Datum	Name	Benennung: Schwellendetails, Détails des seuils, Dettagli soglia für Zargen mit Doppelfalz, Türblatt stumpfeinschlagend Pour huisserie double battues, porte affleurée per telai con porte a filo con doppia battuta?	 Zeichnungs Nr. T8500-4B
GüSt	-				
Zeichnungsstatus: Freigegeben 19.07.2019 KaPa					
Änderungstext: - -					